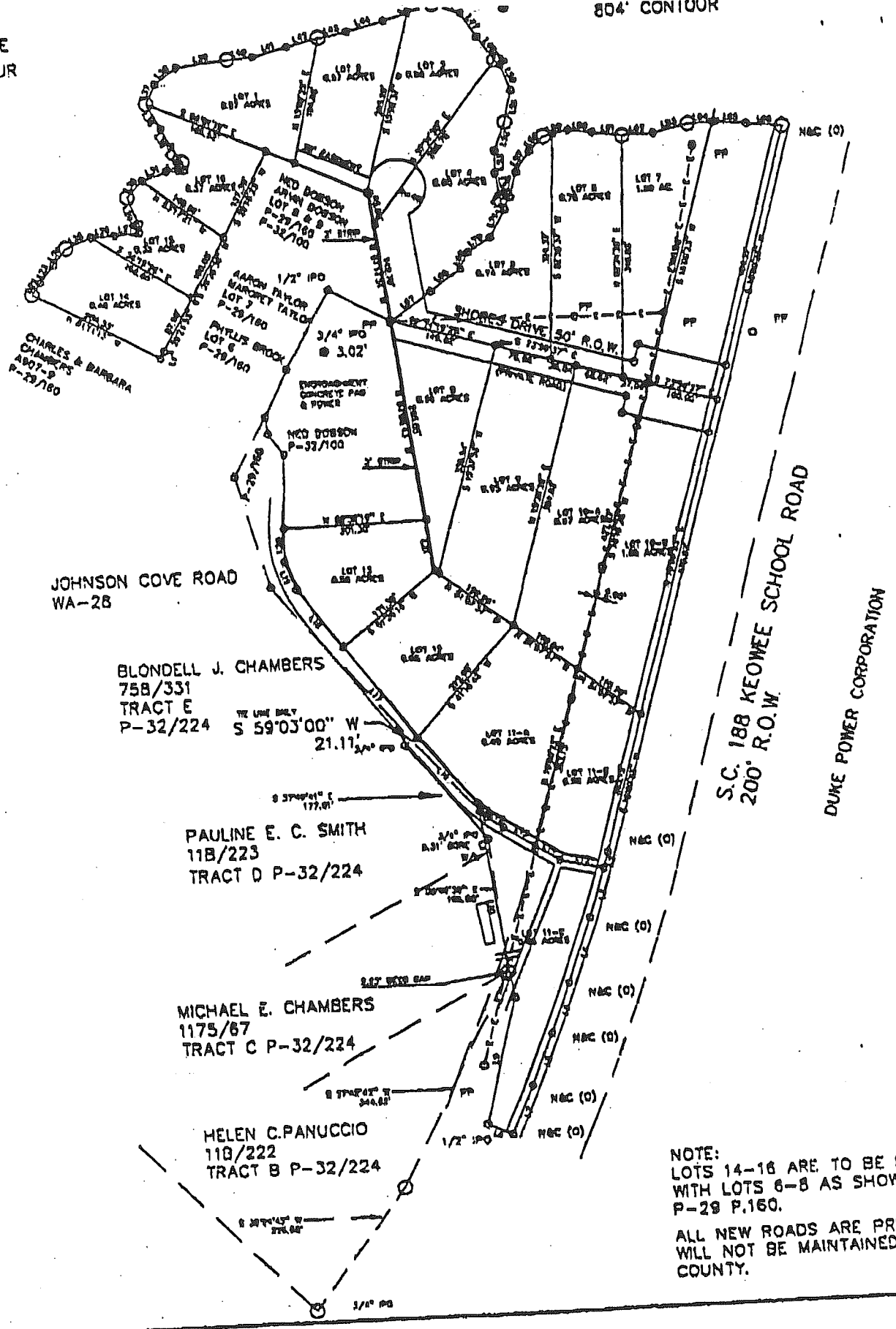


# Keowee Shores

804' CONTOUR

KEOWEE LAKE  
14' CONTOUR



JOHNSON COVE ROAD  
WA-28

BLONDELL J. CHAMBERS  
758/331  
TRACT E  
P-32/224

PAULINE E. C. SMITH  
11B/223  
TRACT D P-32/224

MICHAEL E. CHAMBERS  
1175/87  
TRACT C P-32/224

HELEN C. PANUCCIO  
11B/222  
TRACT B P-32/224

S.C. 188 KEOWEE SCHOOL ROAD  
200' R.O.W.

DUKE POWER CORPORATION

NOTE:  
LOTS 14-18 ARE TO BE RECOMBINED  
WITH LOTS 6-8 AS SHOWN IN  
P-29 P.160.  
ALL NEW ROADS ARE PRIVATE AND  
WILL NOT BE MAINTAINED BY OCONEE  
COUNTY.

MENTS.  
SES.

3/4" PO