



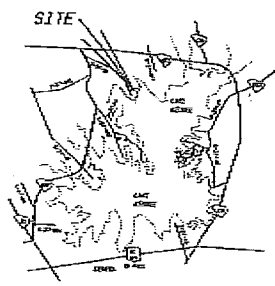
PLAT PREPARED FOR  
**CRESCENT COMMUNITIES S.C., LLC**  
**HARBOR OAKS**  
 SHEET 1 OF 2

TABLE BY ELLERBERG ROAD  
 REF. DE PE  
 REF. PE AS  
 FWD THEM 152-55-01-015

TOTAL LOTS 37.26 AC  
 TOTAL CRE 0.06 AC  
 PUBLIC ROAD 3.51 AC  
 ACRES - PRIVATE ROAD 0.24 AC

DATE: AUGUST 1, 2005  
 REV.: AUGUST 3, 2006  
 STATE OF SOUTH CAROLINA

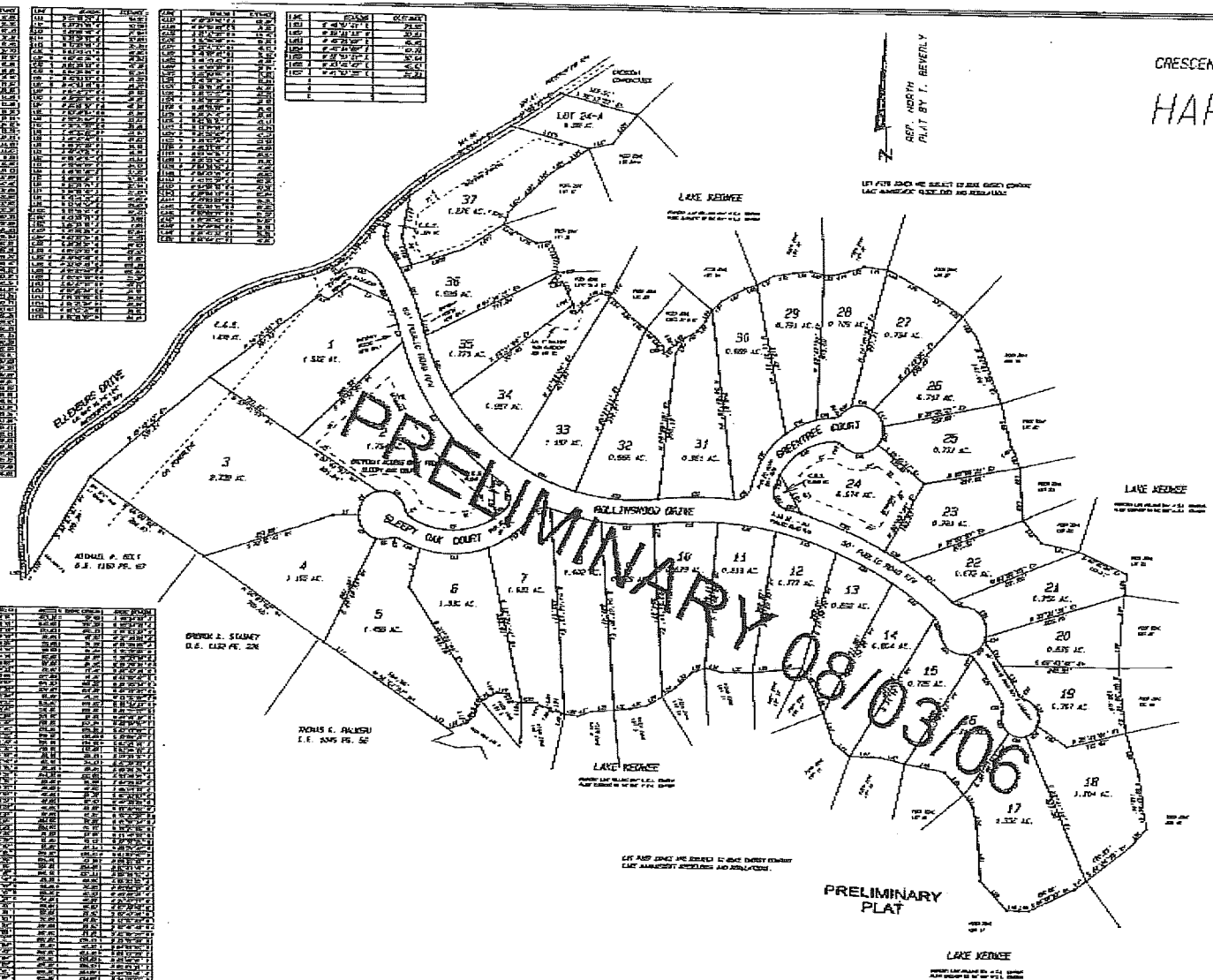
COUNTY OF OCONEE  
 TOWNSHIP OF WABNER  
 SCALE: 1" = 100'



I HEREBY STATE THAT TO THE BEST OF MY KNOWLEDGE, INFORMATION AND BELIEF, THE ABOVE SHOWN PRELIMINARY PLAN IS IN ACCORDANCE WITH THE REQUIREMENTS OF THE REVENUE STATUTES AND FOR THE PURPOSES OF LAND SURVEYING IN SOUTH CAROLINA, AND MEETS OR EXCEEDS THE REQUIREMENTS FOR A CLASS B SURVEY AS SPECIFIED THEREIN.

THERE ARE NO KNOWN ENCUMBRANCES OR RESTRICTIONS OTHER THAN SHOWN.

PRELIMINARY PLAT  
 C O CONVEYOR  
 CRESCENT COMMUNITIES S.C., LLC  
 P.O. BOX 100, OCONEE, S.C. 29579-0100  
 TELEPHONE 854-482-0247



- NOTES:
1. ALL LOTS SHALL BE CONVEYED BY DEED.
  2. ALL LOTS SHALL BE CONVEYED TO THE CRESCENT COMMUNITIES S.C., LLC.
  3. THE CRESCENT COMMUNITIES S.C., LLC SHALL BE THE OWNER OF ALL LOTS.
  4. THE CRESCENT COMMUNITIES S.C., LLC SHALL BE THE DEVELOPER OF ALL LOTS.
  5. THE CRESCENT COMMUNITIES S.C., LLC SHALL BE THE MANAGING AGENT OF ALL LOTS.
  6. THE CRESCENT COMMUNITIES S.C., LLC SHALL BE THE MARKETING AGENT OF ALL LOTS.
  7. THE CRESCENT COMMUNITIES S.C., LLC SHALL BE THE SALES AGENT OF ALL LOTS.
  8. THE CRESCENT COMMUNITIES S.C., LLC SHALL BE THE LEASING AGENT OF ALL LOTS.
  9. THE CRESCENT COMMUNITIES S.C., LLC SHALL BE THE FINANCING AGENT OF ALL LOTS.
  10. THE CRESCENT COMMUNITIES S.C., LLC SHALL BE THE TITLE AGENT OF ALL LOTS.
  11. THE CRESCENT COMMUNITIES S.C., LLC SHALL BE THE RECORDING AGENT OF ALL LOTS.
  12. THE CRESCENT COMMUNITIES S.C., LLC SHALL BE THE TAX AGENT OF ALL LOTS.
  13. THE CRESCENT COMMUNITIES S.C., LLC SHALL BE THE INSURANCE AGENT OF ALL LOTS.
  14. THE CRESCENT COMMUNITIES S.C., LLC SHALL BE THE LEGAL AGENT OF ALL LOTS.
  15. THE CRESCENT COMMUNITIES S.C., LLC SHALL BE THE ACCOUNTING AGENT OF ALL LOTS.
  16. THE CRESCENT COMMUNITIES S.C., LLC SHALL BE THE EMPLOYMENT AGENT OF ALL LOTS.
  17. THE CRESCENT COMMUNITIES S.C., LLC SHALL BE THE LABOR RELATIONS AGENT OF ALL LOTS.
  18. THE CRESCENT COMMUNITIES S.C., LLC SHALL BE THE ENVIRONMENTAL AGENT OF ALL LOTS.
  19. THE CRESCENT COMMUNITIES S.C., LLC SHALL BE THE SAFETY AGENT OF ALL LOTS.
  20. THE CRESCENT COMMUNITIES S.C., LLC SHALL BE THE HEALTH AGENT OF ALL LOTS.
  21. THE CRESCENT COMMUNITIES S.C., LLC SHALL BE THE WELFARE AGENT OF ALL LOTS.
  22. THE CRESCENT COMMUNITIES S.C., LLC SHALL BE THE PENSION AGENT OF ALL LOTS.
  23. THE CRESCENT COMMUNITIES S.C., LLC SHALL BE THE RETIREMENT AGENT OF ALL LOTS.
  24. THE CRESCENT COMMUNITIES S.C., LLC SHALL BE THE BENEFITS AGENT OF ALL LOTS.
  25. THE CRESCENT COMMUNITIES S.C., LLC SHALL BE THE COMPLIANCE AGENT OF ALL LOTS.
  26. THE CRESCENT COMMUNITIES S.C., LLC SHALL BE THE RISK MANAGEMENT AGENT OF ALL LOTS.
  27. THE CRESCENT COMMUNITIES S.C., LLC SHALL BE THE INVESTMENT AGENT OF ALL LOTS.
  28. THE CRESCENT COMMUNITIES S.C., LLC SHALL BE THE ASSET MANAGEMENT AGENT OF ALL LOTS.
  29. THE CRESCENT COMMUNITIES S.C., LLC SHALL BE THE ESTATE PLANNING AGENT OF ALL LOTS.
  30. THE CRESCENT COMMUNITIES S.C., LLC SHALL BE THE TAX PLANNING AGENT OF ALL LOTS.
  31. THE CRESCENT COMMUNITIES S.C., LLC SHALL BE THE FINANCIAL PLANNING AGENT OF ALL LOTS.
  32. THE CRESCENT COMMUNITIES S.C., LLC SHALL BE THE LEGAL COUNSEL AGENT OF ALL LOTS.
  33. THE CRESCENT COMMUNITIES S.C., LLC SHALL BE THE ACCOUNTING COUNSEL AGENT OF ALL LOTS.
  34. THE CRESCENT COMMUNITIES S.C., LLC SHALL BE THE EMPLOYMENT COUNSEL AGENT OF ALL LOTS.
  35. THE CRESCENT COMMUNITIES S.C., LLC SHALL BE THE LABOR RELATIONS COUNSEL AGENT OF ALL LOTS.
  36. THE CRESCENT COMMUNITIES S.C., LLC SHALL BE THE ENVIRONMENTAL COUNSEL AGENT OF ALL LOTS.
  37. THE CRESCENT COMMUNITIES S.C., LLC SHALL BE THE SAFETY COUNSEL AGENT OF ALL LOTS.
  38. THE CRESCENT COMMUNITIES S.C., LLC SHALL BE THE HEALTH COUNSEL AGENT OF ALL LOTS.
  39. THE CRESCENT COMMUNITIES S.C., LLC SHALL BE THE WELFARE COUNSEL AGENT OF ALL LOTS.
  40. THE CRESCENT COMMUNITIES S.C., LLC SHALL BE THE PENSION COUNSEL AGENT OF ALL LOTS.
  41. THE CRESCENT COMMUNITIES S.C., LLC SHALL BE THE RETIREMENT COUNSEL AGENT OF ALL LOTS.
  42. THE CRESCENT COMMUNITIES S.C., LLC SHALL BE THE BENEFITS COUNSEL AGENT OF ALL LOTS.
  43. THE CRESCENT COMMUNITIES S.C., LLC SHALL BE THE COMPLIANCE COUNSEL AGENT OF ALL LOTS.
  44. THE CRESCENT COMMUNITIES S.C., LLC SHALL BE THE RISK MANAGEMENT COUNSEL AGENT OF ALL LOTS.
  45. THE CRESCENT COMMUNITIES S.C., LLC SHALL BE THE INVESTMENT COUNSEL AGENT OF ALL LOTS.
  46. THE CRESCENT COMMUNITIES S.C., LLC SHALL BE THE ASSET MANAGEMENT COUNSEL AGENT OF ALL LOTS.
  47. THE CRESCENT COMMUNITIES S.C., LLC SHALL BE THE ESTATE PLANNING COUNSEL AGENT OF ALL LOTS.
  48. THE CRESCENT COMMUNITIES S.C., LLC SHALL BE THE TAX PLANNING COUNSEL AGENT OF ALL LOTS.
  49. THE CRESCENT COMMUNITIES S.C., LLC SHALL BE THE FINANCIAL PLANNING COUNSEL AGENT OF ALL LOTS.
  50. THE CRESCENT COMMUNITIES S.C., LLC SHALL BE THE LEGAL COUNSEL COUNSEL AGENT OF ALL LOTS.

LOT	ACRES	OWNER
1	1.532	CRESCENT COMMUNITIES S.C., LLC
2	1.532	CRESCENT COMMUNITIES S.C., LLC
3	2.729	CRESCENT COMMUNITIES S.C., LLC
4	1.112	CRESCENT COMMUNITIES S.C., LLC
5	1.409	CRESCENT COMMUNITIES S.C., LLC
6	1.332	CRESCENT COMMUNITIES S.C., LLC
7	1.632	CRESCENT COMMUNITIES S.C., LLC
8	1.632	CRESCENT COMMUNITIES S.C., LLC
9	1.632	CRESCENT COMMUNITIES S.C., LLC
10	1.632	CRESCENT COMMUNITIES S.C., LLC
11	0.813	CRESCENT COMMUNITIES S.C., LLC
12	1.772	CRESCENT COMMUNITIES S.C., LLC
13	0.822	CRESCENT COMMUNITIES S.C., LLC
14	1.024	CRESCENT COMMUNITIES S.C., LLC
15	0.725	CRESCENT COMMUNITIES S.C., LLC
16	1.532	CRESCENT COMMUNITIES S.C., LLC
17	1.532	CRESCENT COMMUNITIES S.C., LLC
18	1.204	CRESCENT COMMUNITIES S.C., LLC
19	0.872	CRESCENT COMMUNITIES S.C., LLC
20	0.872	CRESCENT COMMUNITIES S.C., LLC
21	0.725	CRESCENT COMMUNITIES S.C., LLC
22	0.672	CRESCENT COMMUNITIES S.C., LLC
23	0.725	CRESCENT COMMUNITIES S.C., LLC
24	1.532	CRESCENT COMMUNITIES S.C., LLC
25	0.725	CRESCENT COMMUNITIES S.C., LLC
26	0.725	CRESCENT COMMUNITIES S.C., LLC
27	0.725	CRESCENT COMMUNITIES S.C., LLC
28	0.725	CRESCENT COMMUNITIES S.C., LLC
29	0.725	CRESCENT COMMUNITIES S.C., LLC
30	0.809	CRESCENT COMMUNITIES S.C., LLC
31	0.812	CRESCENT COMMUNITIES S.C., LLC
32	0.856	CRESCENT COMMUNITIES S.C., LLC
33	1.107	CRESCENT COMMUNITIES S.C., LLC
34	1.027	CRESCENT COMMUNITIES S.C., LLC
35	1.027	CRESCENT COMMUNITIES S.C., LLC
36	1.027	CRESCENT COMMUNITIES S.C., LLC
37	1.027	CRESCENT COMMUNITIES S.C., LLC

LOT	ACRES	OWNER
1	1.532	CRESCENT COMMUNITIES S.C., LLC
2	1.532	CRESCENT COMMUNITIES S.C., LLC
3	2.729	CRESCENT COMMUNITIES S.C., LLC
4	1.112	CRESCENT COMMUNITIES S.C., LLC
5	1.409	CRESCENT COMMUNITIES S.C., LLC
6	1.332	CRESCENT COMMUNITIES S.C., LLC
7	1.632	CRESCENT COMMUNITIES S.C., LLC
8	1.632	CRESCENT COMMUNITIES S.C., LLC
9	1.632	CRESCENT COMMUNITIES S.C., LLC
10	1.632	CRESCENT COMMUNITIES S.C., LLC
11	0.813	CRESCENT COMMUNITIES S.C., LLC
12	1.772	CRESCENT COMMUNITIES S.C., LLC
13	0.822	CRESCENT COMMUNITIES S.C., LLC
14	1.024	CRESCENT COMMUNITIES S.C., LLC
15	0.725	CRESCENT COMMUNITIES S.C., LLC
16	1.532	CRESCENT COMMUNITIES S.C., LLC
17	1.532	CRESCENT COMMUNITIES S.C., LLC
18	1.204	CRESCENT COMMUNITIES S.C., LLC
19	0.872	CRESCENT COMMUNITIES S.C., LLC
20	0.872	CRESCENT COMMUNITIES S.C., LLC
21	0.725	CRESCENT COMMUNITIES S.C., LLC
22	0.672	CRESCENT COMMUNITIES S.C., LLC
23	0.725	CRESCENT COMMUNITIES S.C., LLC
24	1.532	CRESCENT COMMUNITIES S.C., LLC
25	0.725	CRESCENT COMMUNITIES S.C., LLC
26	0.725	CRESCENT COMMUNITIES S.C., LLC
27	0.725	CRESCENT COMMUNITIES S.C., LLC
28	0.725	CRESCENT COMMUNITIES S.C., LLC
29	0.725	CRESCENT COMMUNITIES S.C., LLC
30	0.809	CRESCENT COMMUNITIES S.C., LLC
31	0.812	CRESCENT COMMUNITIES S.C., LLC
32	0.856	CRESCENT COMMUNITIES S.C., LLC
33	1.107	CRESCENT COMMUNITIES S.C., LLC
34	1.027	CRESCENT COMMUNITIES S.C., LLC
35	1.027	CRESCENT COMMUNITIES S.C., LLC
36	1.027	CRESCENT COMMUNITIES S.C., LLC
37	1.027	CRESCENT COMMUNITIES S.C., LLC

NOTE: LOT 24-A IS SUBJECT TO DEED GRANT SHOWING LATE AMENDED PLAT 152-55-01-015.